



EXPLORE



# YUKON

LARGER THAN LIFE

**I AM THE LAND  
THAT LISTENS,  
I AM THE LAND  
THAT BROODS;  
STEEPED IN  
ETERNAL BEAUTY,  
CRYSTALLINE  
WATERS AND  
WOODS.**

—ROBERT W. SERVICE  
“THE LAW OF THE YUKON”



travel**yukon**.com









EXPLORE

## Northern Lights



**THE SKIES WERE ALIVE AT  
NIGHT WITH A THROBBING,  
THRILLING FLAME**

—ROBERT W. SERVICE “THE BALLAD  
OF THE NORTHERN LIGHTS”

[travelyukon.com/ni](https://travelyukon.com/ni)









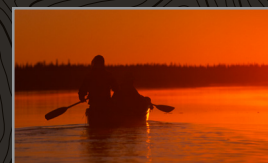
# THERE ARE STRANGE THINGS DONE IN THE MIDNIGHT SUN

—ROBERT W. SERVICE  
“THE CREMATION OF SAM MCGEE”



EXPLORE

## Midnight Sun



[travelyukon.com/ms](https://travelyukon.com/ms)









**IT'S THE BEAUTY THAT  
FILLS ME WITH WONDER**

—ROBERT W. SERVICE  
“THE SPELL OF THE YUKON”



EXPLORE

## Pristine Wilderness



[travelyukon.com/pw](https://travelyukon.com/pw)





## Iconic Drives



[travelyukon.com/id](https://travelyukon.com/id)



## THE FRESHNESS, THE FREEDOM, THE FARNNESS

—ROBERT W. SERVICE

“THE SPELL OF THE YUKON”











EXPLORE

# Klondike Gold Rush



[travelyukon.com/kg](https://travelyukon.com/kg)





**A BUNCH OF THE BOYS  
WERE WHOOPING IT UP IN  
THE MALAMUTE SALOON**

—ROBERT W. SERVICE

“THE SHOOTING OF DAN MCGREW”







EXPLORE

## Arts and Culture



[travelyukon.com/ac](http://travelyukon.com/ac)



## CHANTING ALOFT IN THE PINE-TOPS, THE WIND HAS A LESSON TO TEACH

—ROBERT W. SERVICE  
“THE THREE VOICES”











ABOUT

**Want a vacation filled with dozens of adventures you'll find nowhere else on Earth?** Just look for this badge. Start planning now at [Travelyukon.com](http://Travelyukon.com)



UNIQUELY  
**Yukon**  
EXPERIENCE

## DID YOU KNOW?

- Close to 80 per cent of Yukon remains pristine wilderness
- At the peak of the Klondike gold rush, Dawson City was called "The Paris of the North"
- The Carcross Desert is affectionately known as the world's smallest desert
- The Yukon Quest is known as one of the toughest dogsled races in the world. It runs over 1,600 km (1,000 mi.) between Fairbanks, Alaska, and Whitehorse, Yukon
- Canada's highest mountain is here: Mount Logan, at 5959 metres (19,551 feet)
- On the summer solstice, the sun never sets in some parts of Yukon
- In the Athapaskan language, the word Yukon means the great river or big river
- The Dempster Highway is the only public road that crosses the Arctic Circle
- Our official bird is the raven, and our official flower is the fireweed
- We're home to more than 160,000 caribou, 70,000 moose, 22,000 mountain sheep, 6,000 grizzly bears and 220 species of birds... and 34,000 humans

## DRIVING DISTANCES TO WHITEHORSE

Vancouver, BC	2,375 / 1,484
Prince George, BC (via Stewart-Cassiar Highway)	1,622 / 1,014
Prince George, BC (via Alaska Highway)	1,824 / 1,140
Calgary, AB	2,317 / 1,448
Edmonton, AB	2,038 / 1,274
Fairbanks, AK	965 / 603
Anchorage, AK	1,134 / 709

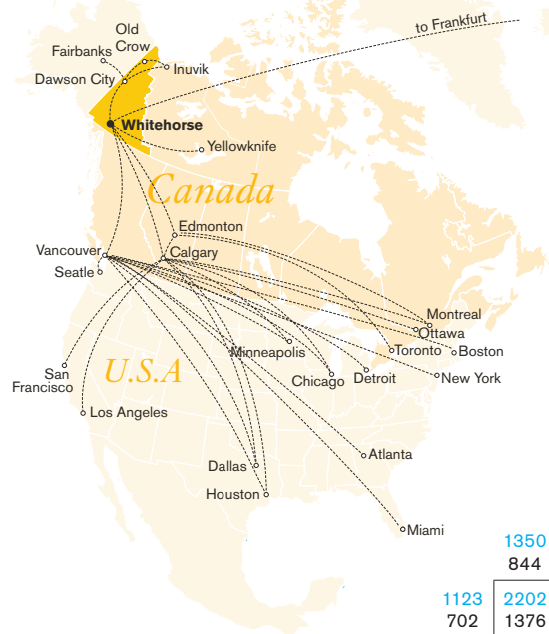
## TRAVEL TIMES

### BY ROAD

Whitehorse → Dawson City	5 hrs
Whitehorse → Watson Lake	5 hrs
Whitehorse → Skagway, AK	2 hrs
Whitehorse → Haines Junction	2 hrs
Whitehorse → Burwash Landing	3 hrs
Whitehorse → Faro	4 hrs
Dawson City → Inuvik, NWT	12 hrs
Dawson City → Tok, AK	3.5 hrs

### BY AIR

Vancouver → Whitehorse	2.5 hrs
Calgary → Whitehorse	3 hrs
Edmonton → Whitehorse	3 hrs

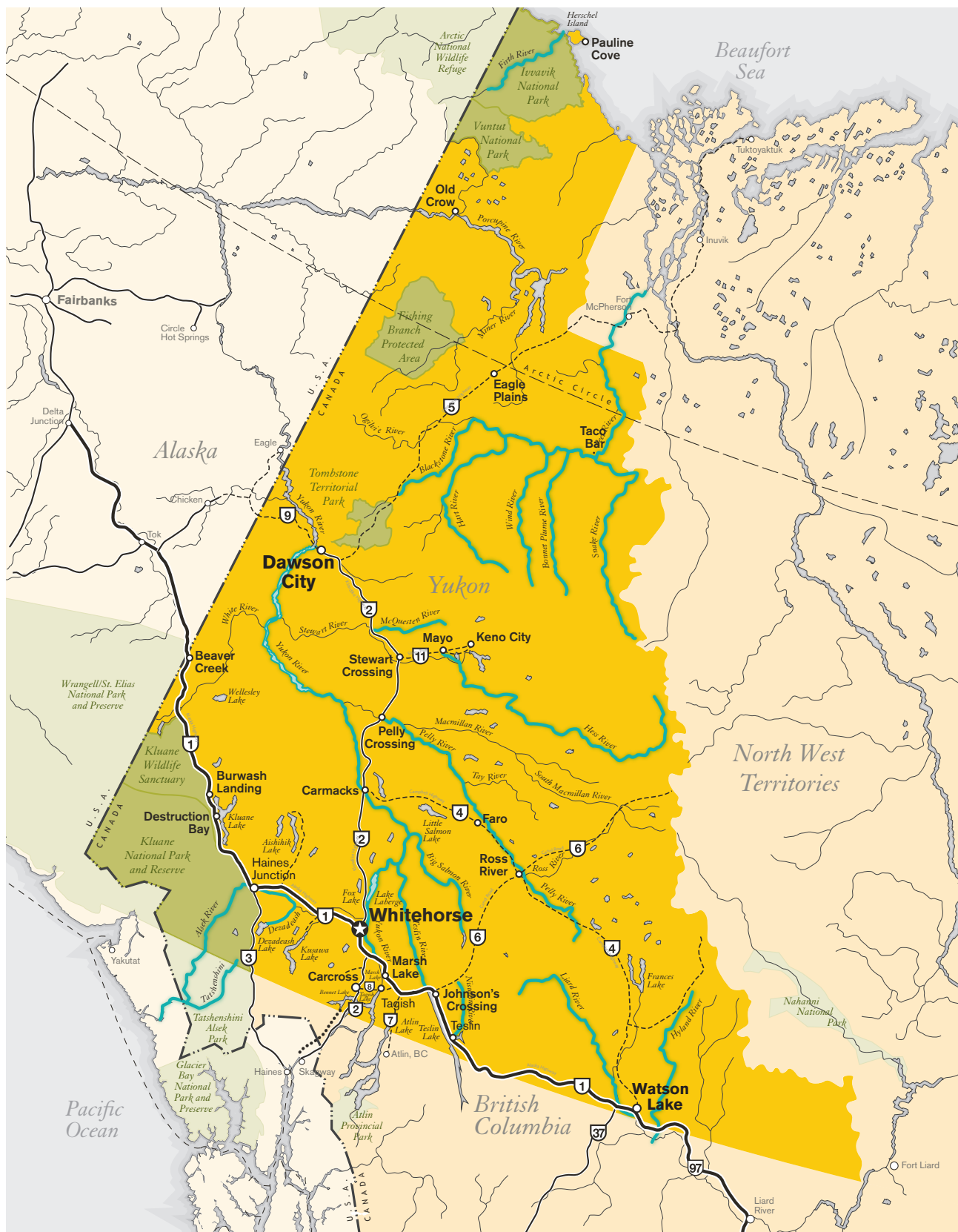


## DRIVING DISTANCES

■ Km ■ Miles

	Whitehorse YT		Watson Lake YT		Skagway AK		Mayo YT		Inuvik NWT		Haines Junction YT		Fort Nelson BC		Dawson Creek BC		Dawson City YT		Beaver Creek YT	
	Km	Miles	Km	Miles	Km	Miles	Km	Miles	Km	Miles	Km	Miles	Km	Miles	Km	Miles	Km	Miles	Km	Miles
Dawson City YT	986	616	451	282	520	325	581	363	918	574	1350	844	1123	702	1965	1228	1512	945	1675	1047
Dawson Creek BC	1870	1169	451	282	520	325	581	363	918	574	1350	844	1123	702	1965	1228	1512	945	1675	1047
Fort Nelson BC	1432	895	451	282	520	325	581	363	918	574	1350	844	1123	702	1965	1228	1512	945	1675	1047
Haines Junction YT	294	184	451	282	520	325	581	363	918	574	1350	844	1123	702	1965	1228	1512	945	1675	1047
Inuvik NWT	1675	1047	451	282	520	325	581	363	918	574	1350	844	1123	702	1965	1228	1512	945	1675	1047
Mayo YT	859	537	451	282	520	325	581	363	918	574	1350	844	1123	702	1965	1228	1512	945	1675	1047
Skagway AK	627	392	451	282	520	325	581	363	918	574	1350	844	1123	702	1965	1228	1512	945	1675	1047
Watson Lake YT	904	565	451	282	520	325	581	363	918	574	1350	844	1123	702	1965	1228	1512	945	1675	1047
Whitehorse YT	453	283	451	282	520	325	581	363	918	574	1350	844	1123	702	1965	1228	1512	945	1675	1047





- ★ Capital City – Yukon
- Alaska Highway
- Primary Highway
- ..... Unpaved Road
- - - Ferry Route
- National/Territorial Park

- 97 1 Alaska Highway
- 2 Klondike Highway
- 3 Haines Road
- 4 Campbell Highway
- 5 Dempster Highway
- 6 Canol Road
- 7 Atlin Road
- 8 Tagish Road
- 9 Top of the World Highway
- 11 Silver Trail
- 37 Stewart-Cassiar Highway



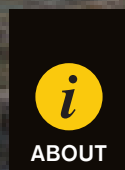
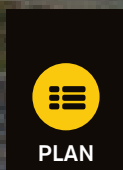
[travelyukon.com/map](https://travelyukon.com/map)







**WANT MORE YUKON?**  
Call for a FREE Yukon Vacation  
Planner today: **1-800-661-0494**  
or visit us online



Government of Yukon,  
Department of Tourism and Culture  
P.O. Box 2703, Whitehorse, YT, Canada Y1A 2C6



travel**yukon**.com